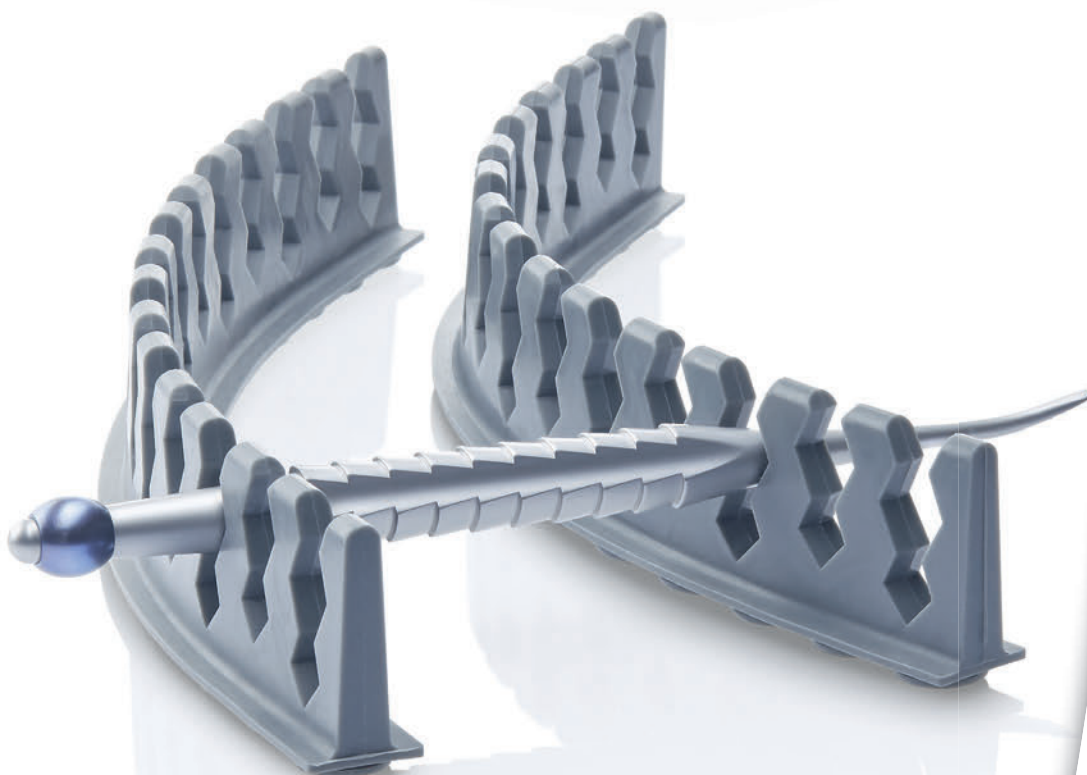


Flexible, efficient and approved safe

The **ZEPF**-Care Universal Silicone Profile allows an easy placement of the instruments after a surgery. For sterilization and cleaning the instruments are inserted in the profile according to their diameter and are immediately secured.

Additionally we have equipped the **ZEPF**-Tray and Basket-System with silicone base. Therefore the tray guarantees an anti-slip position and the stacking stability is improved at the same time.

Suitable for standardized sterilization containers it's available in four different sizes for an ideal working potential. Place-saving, secure and very practical and with a removable lid.



The Modular Hygiene System
Instrument Management with Flexibility.



HELMUT ZEPF
MEDIZINTECHNIK GMBH
www.zepf-dental.com



modular



individual

The meshes of the bottom and the lid are designed in a broad shape. Consequently dead zones are minimized.

The diagonal profile of the mesh simplifies the identification of the parallel arranged instruments in the profile.

The meshes on the edge of the tray are designed in a narrow shape and thus enhance the stability of the tray. The risk of injury is reduced.

The **ZEPF-Care-System** increases your efficiency, as you can assemble your trays in a process-oriented way and work accordingly.

You will meet the requirements of the RKI and the accident prevention regulation. It doesn't matter whether you are cleaning your instruments manually or automatically.

Washtrays

85.182.00



1/3

178 x 90 x 24



85.181.00

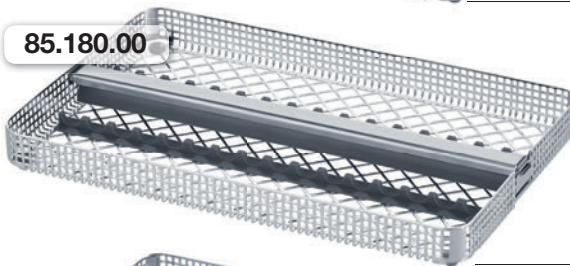


1/2

178 x 135 x 24

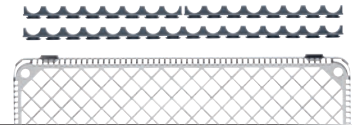


85.180.00



1/1

275 x 178 x 24

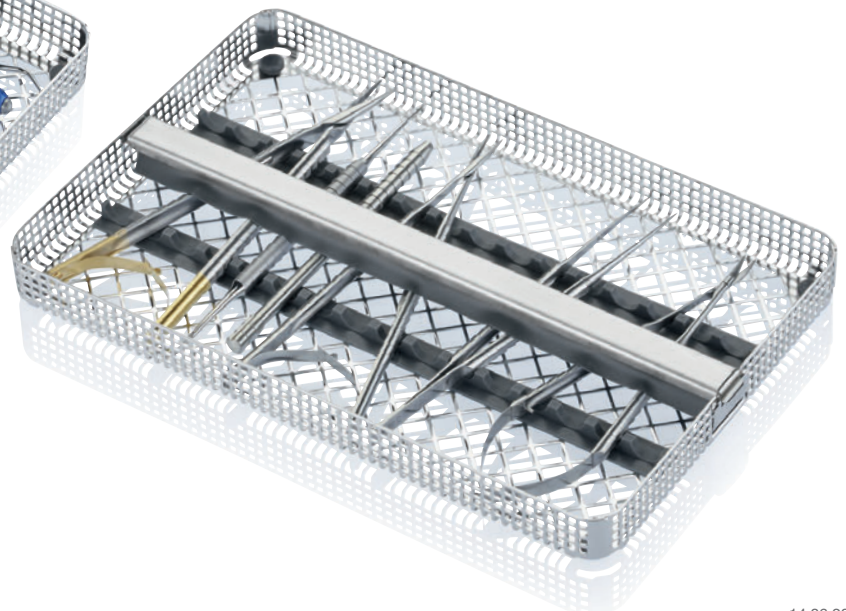
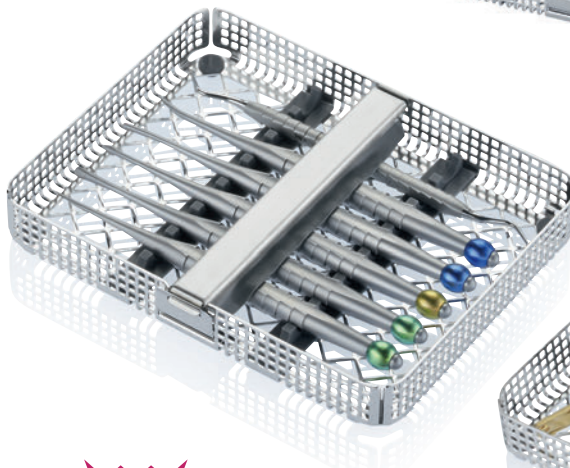


85.180.10



1/1

275 x 178 x 24



HELMUT ZEPF
MEDIZINTECHNIK GMBH

Tel.: +49 (0) 7464/9888-0



flexible



stackable



secure

Washbaskets

178 x 90 x 37

1/3

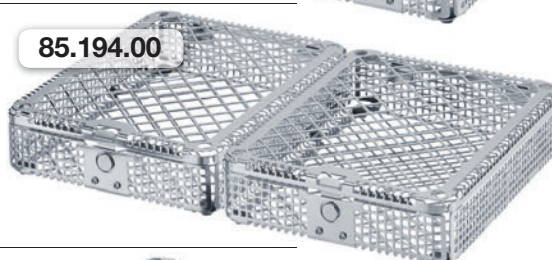
85.192.50



178 x 135 x 37

1/2

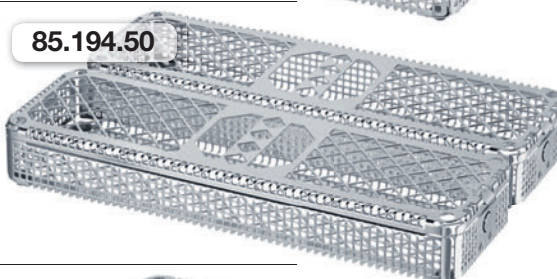
85.194.00



275 x 86 x 37

1/2

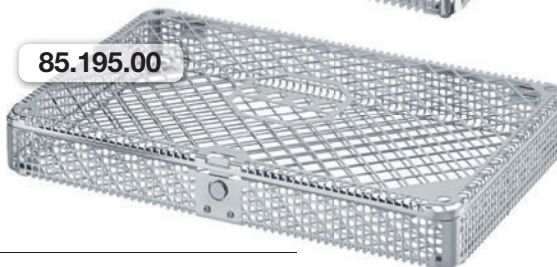
85.194.50



275 x 178 x 37

1/1

85.195.00



HELMUT ZEPF
MEDIZINTECHNIK GMBH
www.zepf-dental.com



intelligent

Arranged in a practice-oriented way

As a result of the high and low configuration of the profile sections, the instruments can be placed in a space-saving way and can be removed easily.

It is possible to place two instruments above each other in one profile section.

Contact of the instruments should be avoided in order to prevent contact corrosion.

Tip:

The following instrument combinations are **possible** should they contact each other:

- plastic / plastic ✓
- plastic / metal ✓
- titanium / titanium ✓
- titanium / metal ✓

In case of contact the following instrument combination is **not possible**:

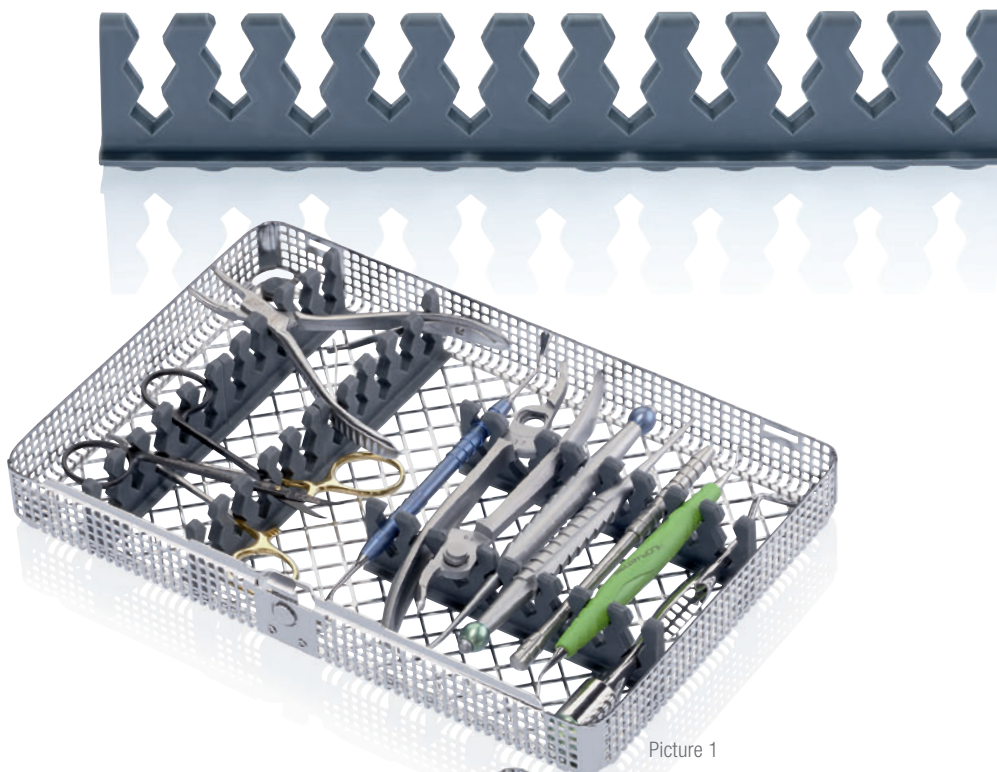
- metal / metal ✗

The modular concept of the three different lengths can be tailored according to your request.

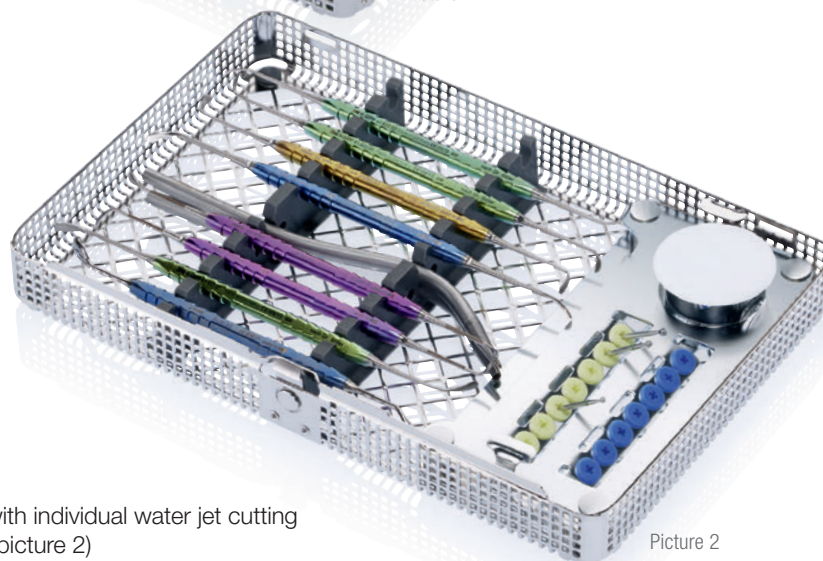
The 'universal profile' is compatible with the 'low profile' in order to ensure a secure hold of different instrument diameters and variations.

For special cases we recommend the assembly of our press pad in the lid.

Profile, high, universal
(Example see picture 1)



Picture 1



Picture 2

Profile, high, with individual water jet cutting
(Example see picture 2)



HELMUT ZEPF
MEDIZINTECHNIK GMBH

Tel.: +49 (0) 7464/9888-0

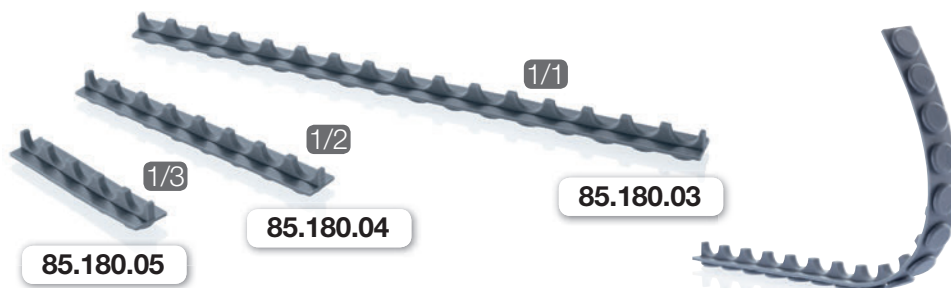


flexible



modular

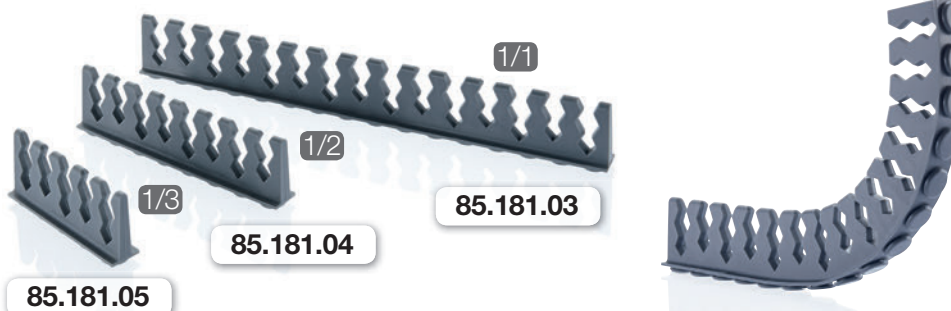
Profile, low



Scale 1:1



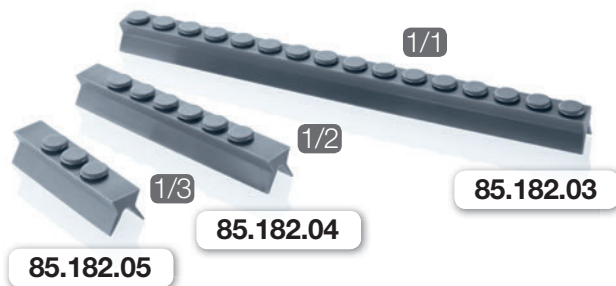
Profile, high, universal



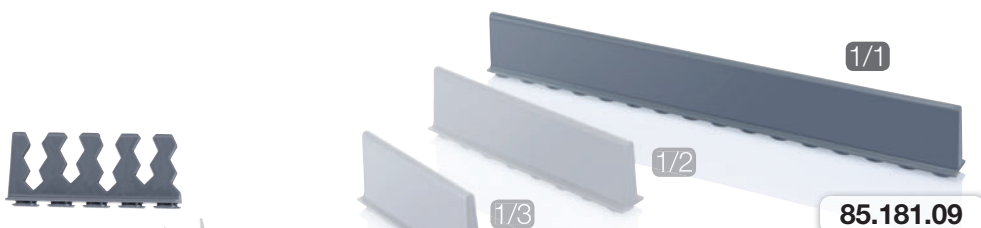
Scale 1:1



Press Pad



Profile, high, individual



The length is adjusted individually

Individual Silicone Profiles

Apart from a regular pair of scissors there are no other tools required for the assembly.

There are no limits set regarding design of your personalized tray.



HELMUT ZEPF
MEDIZINTECHNIK GMBH
www.zepf-dental.com

Aluminium Sterilization Container in 5 Sizes

**Bottom and lid perforated,
incl. 2 long-term textile filters.**

Dimensions in mm:

Outside: width 310 / depth 190 / height X

Inside: width 280 / depth 182 / height X

85.327.00



Height X in mm:
outside 40, inside 35
Capacity:
1 washtray, 0 washbaskets

6

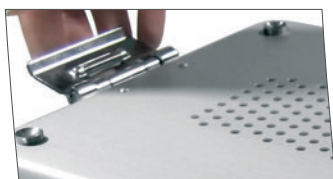
Sterilization Container

Through the integrated filter in the lid and the base the Sterilization Containers are suitable for all steam sterilization methods.

- Fractionised vacuum method
- Fractionised steam method
- Gravitation method
- Pre-vacuum method

Different dimensions and stackability allow easy handling and optimal organization. The containers can be used for storing sterile goods and also for disposing contaminated instruments.

The newly developed latch system prevents accidental opening of the container. And assures a simplified handling for the sterilization preparation.



The optimized sealing system assures a safe fixing of the filter.



85.327.10



Height X in mm:
outside 65, inside 55
Capacity:
2 washtrays, 1 washbasket

85.327.15



Height X in mm:
outside 80, inside 70
Capacity:
2 washtrays, 1 washbasket

85.327.20



Height X in mm:
outside 100, inside 90
Capacity:
3 washtrays, 2 washbaskets

85.327.30



Height X in mm:
outside 130, inside 124
Capacity:
5 washtrays, 3 washbaskets

85.327.50



Paper filter with indicator
235 x 118 mm
packing unit 100 pieces

85.327.60



Teflon® long-term filter
215 x 145 mm
packing unit 2 pieces

85.327.70



Latch seal for
sterilization containers,
plastic, blue
packing unit 100 pieces

Labelling tags
from aluminium in
9 different colors



85.312.00
85.312.01
85.312.02
85.312.03
85.312.04
85.312.05
85.312.07
85.312.08
85.312.09

brown
blue
yellow
green
purple
orange
red
black
silver



HELMUT ZEPF
MEDIZINTECHNIK GMBH

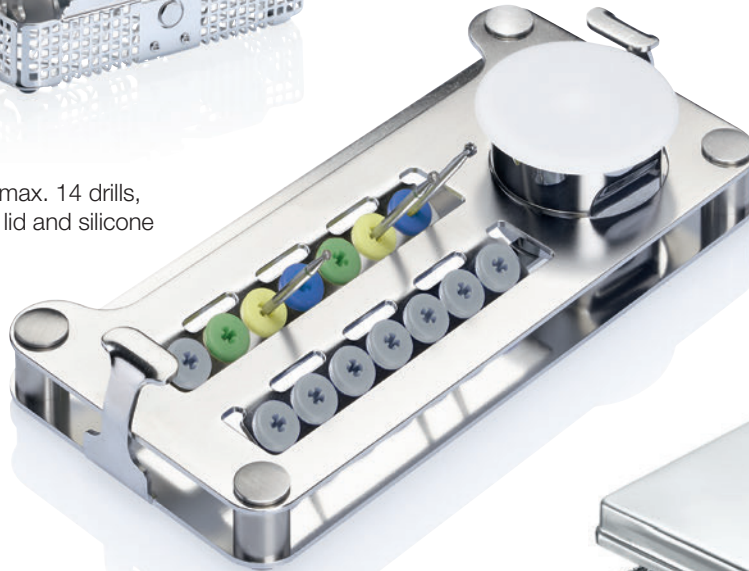
Tel.: +49 (0) 74 64 / 98 88 - 0

Dental-Tray Cassettes and System Rack













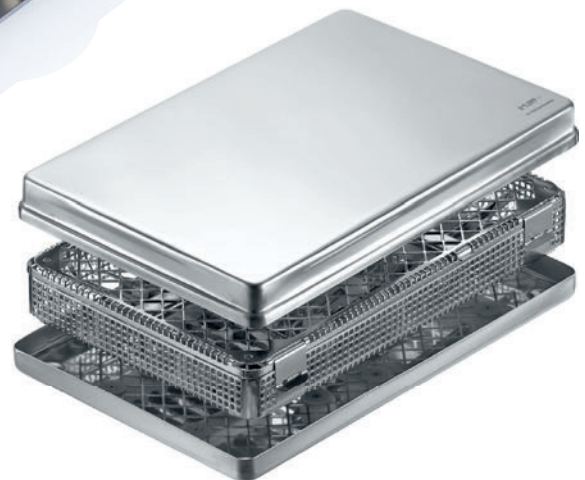
85.703.00

System drill rack for max. 14 drills,
incl. mixing cup with lid and silicone
bushings



Drill holder inserts, assorted in 9 colors
(5 pieces ea. per packing unit).
85.183.40 with bigger inner diameter for piezo
instruments, available only in black color.

- | | |
|--|--|
|  85.183.40 |  85.183.46 |
|  85.183.41 |  85.183.47 |
|  85.183.42 |  85.183.48 |
|  85.183.43 |  85.183.49 |
|  85.183.44 | |
|  85.183.45 | |



85.142.20

Norm-Tray-Cover 1/2,
non perforated, 180 x 140 x 25 mm

85.142.10

Norm-Tray-Bottom 1/2,
perforated, 180 x 140 x 19 mm

85.145.00

Norm-Tray-Cover 1/1,
non perforated, 280 x 180 x 25 mm

85.150.00

Norm-Tray-Bottom 1/1,
perforated, 284 x 183 x 17 mm



85.251.03

Mixing cup with lid
85.251.10 Lid
85.251.13 Mixing cup



HELMUT ZEPF
MEDIZINTECHNIK GMBH
www.zepf-dental.com



As an instrument manufacturer the company Helmut Zepf developed a product line for the optimum processing of dental instruments, in close cooperation with a renowned manufacturer of disinfectant and cleaning agents.

An underestimated part of the instruments in a dental practice is damaged during the daily hygiene cycle; sometimes the instruments are nearly completely destroyed. The potential reasons are widely spread and need a close observation.

The use of abrasive cleaning agents, metal brushes, the failure to comply with specified timelines etc. are only an extract of possible reasons.

In order to support the practice team or the hygiene manager in particular, we now offer care products for an optimal and safe processing with our products **AdCon**, **NCDC-Cleanser** and **ProActive-Cleanser**.

For further information:
www.zepf-dental.com


Practical dispensing bottle




HELMUT ZEPF
MEDIZINTECHNIK GMBH

Tel.: +49 (0) 74 64 / 98 88 - 0



 **65.893.00 AdCon**
Cleansing foam
in a spray bottle, 500 ml

 **65.893.06 AdCon**
Packing unit 6 bottles



 **65.894.00 NCDC-Cleanser**
Liquid concentrate, dispensing bottle,
1 L = 200 litres ready-to-use solution

 **65.894.04 NCDC-Cleanser**
Packing unit: 4 bottles



AdCon Cleansing Foam – for an intensive but not protein fixated pre-cleaning of all instruments

AdCon is a surface active and germ reducing cleaning foam.

AdCon undercuts protein residues as well as body fluids. These particular characteristics prevent organic residues from drying as these residues could result in incrustation with crevice corrosion and pitting corrosion. By carrying out a pre-treatment with **AdCon** the cleaning will be much more efficient and gentle – no matter whether you clean your instruments manually or automatically!

AdCon is the ideal solution for users who have to consider longer periods before cleaning. 80% of the instruments' damages are due to crevice corrosion and pitting corrosion. The reasons are protein incrustations. So far, aggressive cleaning agents have been used in order to remove incrustations which resulted in several other disadvantages. With **AdCon** such handling errors are actively prevented. The cleanings become more gentle and efficient. The lifetime of your instruments will be considerably improved.

before the usage of AdCon after and during the usage



NCDC-Cleanser – highly effective liquid concentrate for cleaning and disinfection of rotating and general dental instruments

NCDC-Cleanser is a liquid solution free of aldehyde and phenol for cleaning and high performance disinfection for the use in a dip tank or ultra-sonic bath. **NCDC-Cleanser** is used universally for surgical and rotating instruments.

The ready-to-use solution is gentle on materials and has a low electrical conductivity. Therefore, electrolytic effects, which have led to pitting corrosion when the instruments were not processed immediately, are prevented.

The new formula protects all instruments from corrosion. **NCDC-Cleanser** is VAH/DGHM certified.



 **65.894.10 NCDC-Cleanser**
Sample bottle, 50 ml

24.950.10 | 24.950.12
Medical White Oil | in an oil pen
 50 ml | 12 ml



ProActive-Cleanser – an acid liquid solution in a dispensing bottle

The **ProActive-Cleanser** is an acid high performance cleanser for all dental and surgical instruments.

The **ProActive solution** is ideal for pre-cleansing of new products. In a higher concentration as acid basic cleanser to clean already incrustated residues e.g. protein, flash rust, lime and oil.

ProActive activates the chrome components of high-alloy medical steel, whereby the development of the natural chromium oxide layer is accelerated and intensified.

The instruments are therefore again resistant to corrosion. Cleaning and passivation in one step.



65.895.10
ProActive-Cleanser
 Sample bottle, 50 ml



65.895.00

ProActive-Cleanser

Liquid concentrate in a dispensing bottle 1 L. This gives you 50 - 100 litres ready-to-use solution. As acid basic cleaning or heavy contamination 20 litres.

65.895.04

ProActive-Cleanser
 Packing unit: 4 bottles

Heavy incrustations before / after acid basic cleaning



Cleaning Brushes with nylon bristles

85.903.01

Double-ended, one side with three lines, one side with one line,
 Packing unit: 3 pieces



85.903.03

For suction tube Ø 1.5 mm



85.903.04

For suction tube Ø 3 mm and Ø 5 mm



You can find detailed information on all **ZEPP**-Care Products here.
 Or ask for an appointment with a consultant:
 Phone: +49 (0) 74 64 / 98 88 -0

PROBLEM: Incrustations

Incrustations occur and the cleaning is additionally harder, because of an exceeded immersion time after the usage of the instruments.



SOLUTION: Pre-cleaning

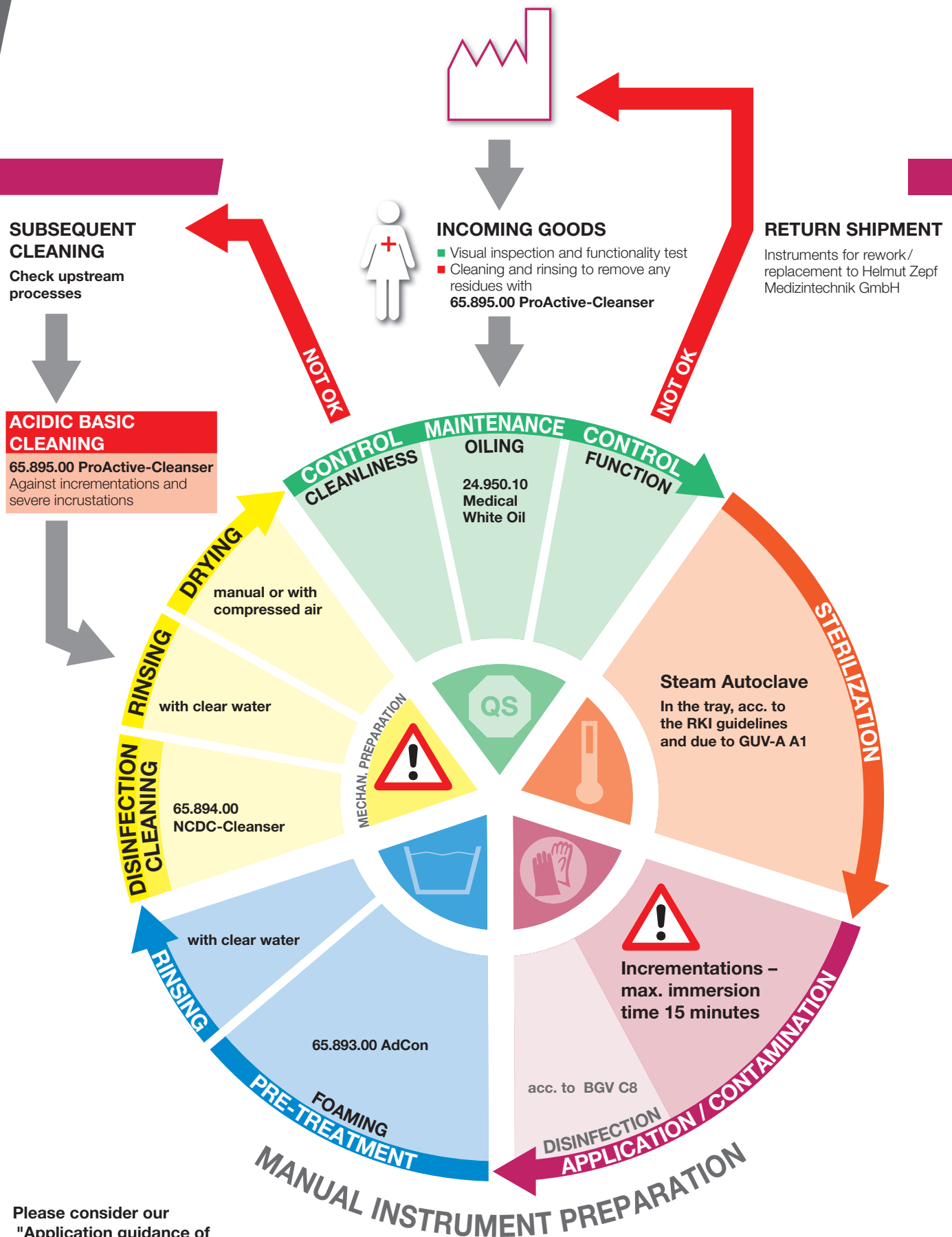
Please treat the instruments with **AdCon** the latest 15 minutes after usage in order to prevent incrementations.



Metal brushes destroy the passive layer of the instrument surface



HELMUT ZEPP
 MEDIZINTECHNIK GMBH
www.zepf-dental.com



Please consider our
"Application guidance of
autoclavable instruments
and accessories according
to DIN EN ISO 17664:2004"

AESTHETIC IS THE RESULT