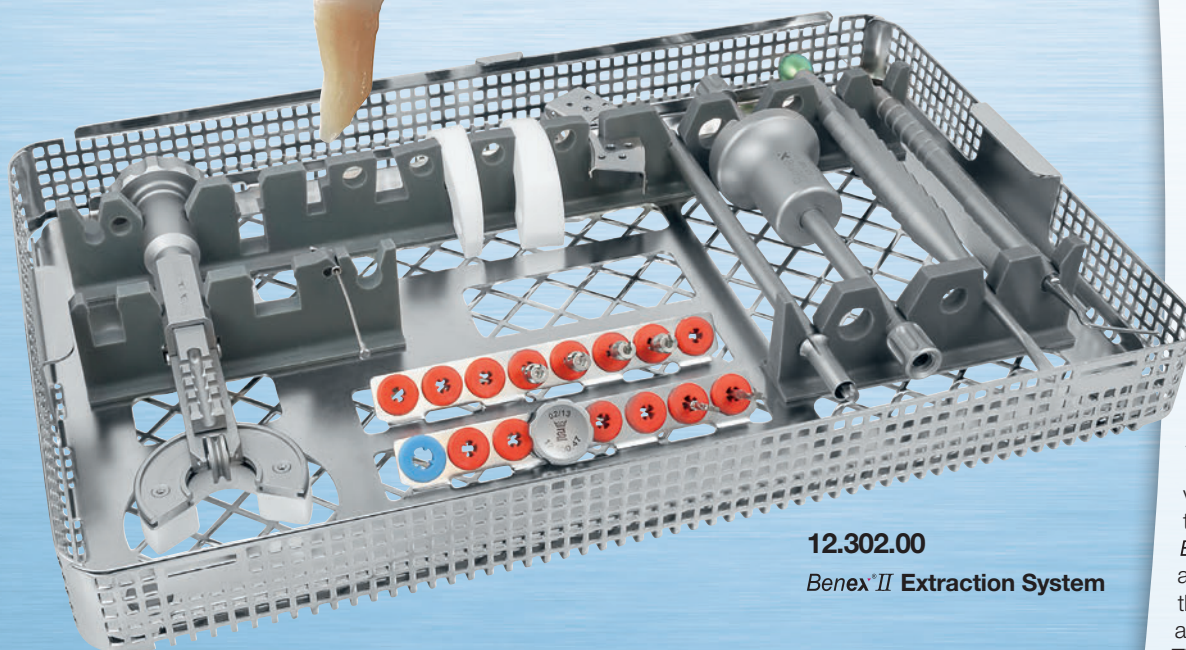


Benex® II
Pat.No. CH 696 458

12.300.08

Benex® II Extractor

NEW!



12.302.00

Benex® II Extraction System

Benex® II- Extraction System

by Benno Syfrig Dr. med., med. dent.

Pursuing logically the quest of gentle extraction, **HELMUT ZEPF** Medizintechnik GmbH has developed a new, patented (Pat. No. CH 696 458) extraction system in close collaboration with Benno Syfrig Dr. med., med. dent from Switzerland.

In modern dental treatment, implantology following extraction is increasingly favoured. Consistent with the principle of minimal invasion, conserving soft and hard tissue structures is a must. Starting with extraction.

The modified **Benex® II** Extractor guarantees a gentle and simple extraction of roots in the whole mouth. It is nearly impossible to harm the soft tissue and the surrounding bone. Due to the longitudinal extraction, **Benex® II** is an optimal basis for direct implantation. It is also a valuable help for retarded implantation after the extraction with **Benex® II** system. Studies made after the use of **Benex®** prove that the reossification of the extraction alveole is advancing optimally. This is a great advantage for the retarded implantation.

The new **Benex® II** is now available in a washtray complying with the RKI guidelines. That way, the requirements of optimal cleanability and sterilization were taken into account. You will find further information, application examples and the **Benex®** user forum at:
www.benex-dent.com



HELMUT ZEPF
MEDIZINTECHNIK GMBH

NEWS

03/13



Benex® II
Pat.No. CH 696 458

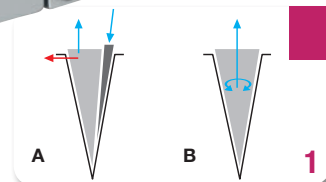
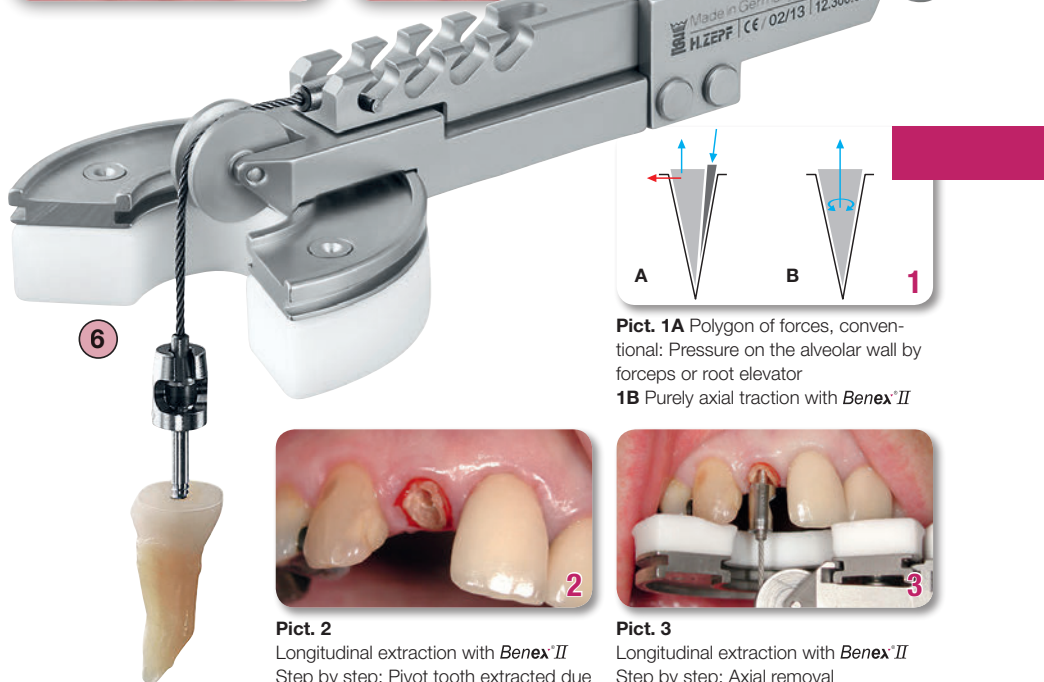
2

Alveolar-Ridge-Preservation with Benex® II

What does it mean?

Alveolar-Ridge-Preservation means the treatment of the dental alveole after extraction. 3 months after the Benex® extraction you find a considerably better ridge relation than with conventional gentle extractions.

The Benex® finds its successful application in both, private practices and universities. The Benex® has achieved an excellent status worldwide as basis for a subsequently successful implantation.



Pict. 1A Polygon of forces, conventional: Pressure on the alveolar wall by forceps or root elevator

1B Purely axial traction with Benex® II



Pict. 2
Longitudinal extraction with Benex® II
Step by step: Pivot tooth extracted due to root fracture



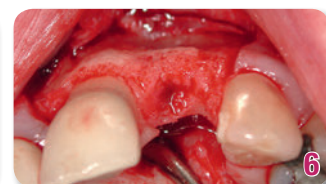
Pict. 3
Longitudinal extraction with Benex® II
Step by step: Axial removal



Pict. 4
Longitudinal extraction with Benex® II
Step by step: Soft and hard tissues preserved



Pict. 5
Longitudinal extraction with Benex® II
Step by step: Soft tissue, 12 weeks after extraction



Pict. 6
Longitudinal extraction with Benex® II
Step by step: Alveolar ridge, 12 weeks after extraction

The new support for the dismantled Benex® System in a washtray guarantees an optimal cleanliness of Benex® in a washing machine or in an ultrasonic bath. All components can be fixed safely in the support.

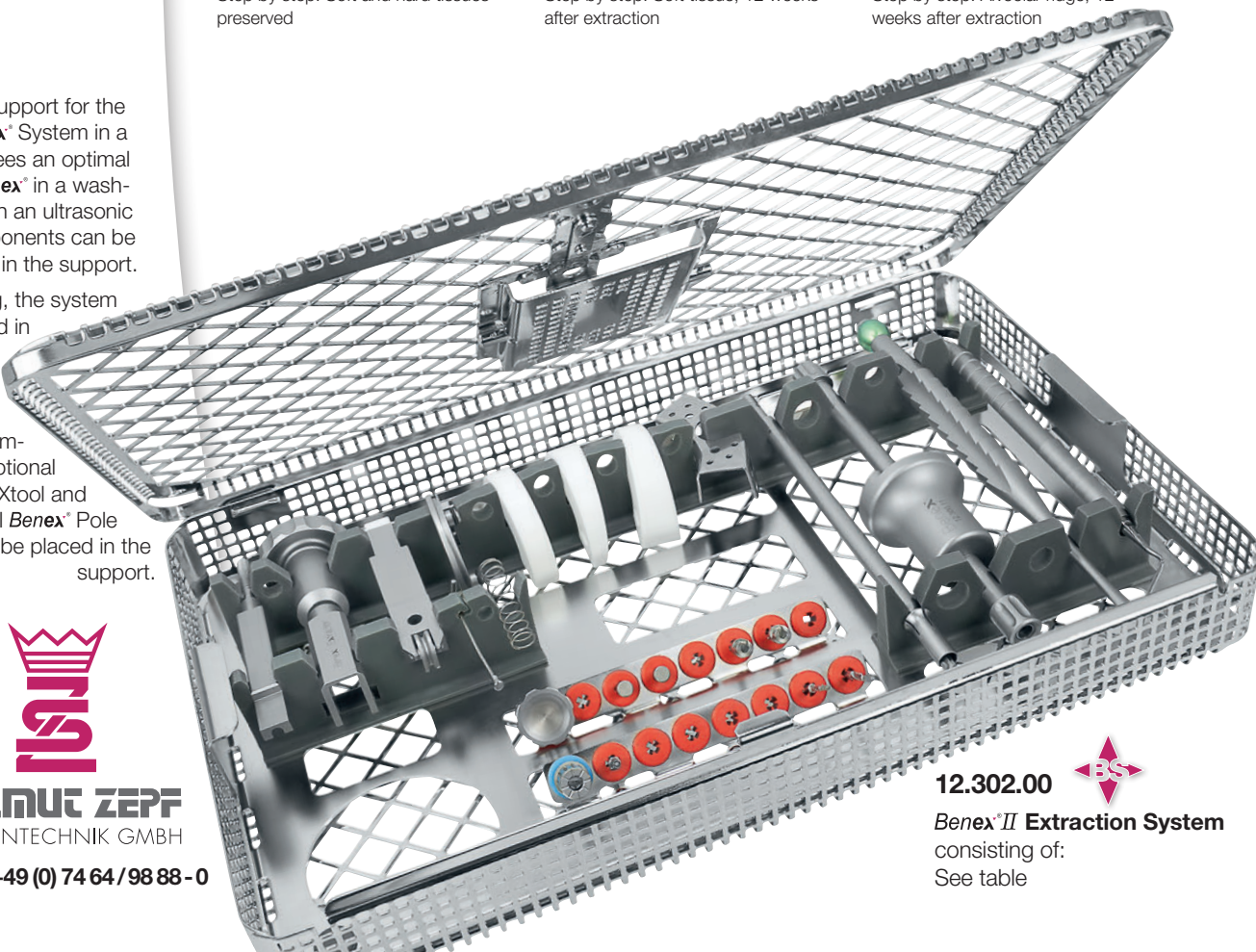
Upon cleaning, the system can be sterilized in assembled condition.

In addition to the Benex® components, an optional periosteum, an Xtool and an optional Benex® Pole Extractor can be placed in the support.



HELMUT ZEPF
MEDIZINTECHNIK GMBH

Tel.: +49 (0) 74 64/98 88-0



12.302.00

Benex® II Extraction System
consisting of:
See table





Benno Syfrig

- Since 1992 Oral-Surgical Referral Practice with Dr. Bernd Bloch
- Development and scientific evaluation of a new, minimally invasive surgical method for implantation in the maxillary sinus area: Publication in 2010, Deutscher Ärzte-Verlag | zzi | Z Zahnärztl Impl | 2010; 26 (1)
- Development and patenting of an instrument for a tissue-conserving tooth root extraction (Benex Extractor)
- Adviser activity as specialist dental practitioner since 15 years
- Since 1998 Management of the ITI (International Team for Implantology) User Meeting of Central Switzerland
- Regular Live Demo Surgeries of Implantation for Dentists and specialists from dental industry
- 1989 - 1992 Dental Assistant in a Private Practice
- 1982 - 1989 Regular substitution of the SUVA District Medical Officer, approx. 1 working year in total
- 1986 - 1989 Studies of Dental Medicine, University of Basel, State examination in 1989
- 1979 - 1986 Assistant Doctor in different hospitals, with focus on surgery
- 1981 Doctoral Thesis: The Splenome
- 1973 - 1979 Studies of Medicine, University of Zürich, State examination in 1979

The new Benex® II Support Discs



The new Benex® II Support Discs allow an easy and fast compensation of the axial adjustment of Benex® II to the root to be extracted, if the straight support disc is not sufficient.



HELMUT ZEPF
MEDIZINTECHNIK GMBH

www.zepf-dental.com

Illustration	Article description	Quantity
NEW! 	12.302.00 Benex® II Extraction System by Benno Syfrig, Dr. med., med. dent. consisting of: Benex® II Extractor, Pullrope 48 mm, Driver Guide, Screw short 1.6 + 1.8 mm, Screw long 1.6 mm, 1 Drill ea. 1.6 + 1.8 mm screws, Quadrant Support, 85.185.00 Washtray with Lid, 12.302.01 Tray/Rack for Benex® II	1 piece
	12.302.01 Benex® Tray / Rack, without content	1 piece
	85.185.00 Washtray 1/1 with Lid	1 piece
	12.300.08 Benex® II Extractor	1 piece
	12.300.15 Replacement Support Disc, 8 mm (PTFE)	1 piece
NEW! 	12.300.17 Support Disc, diagonally left	1 piece
	12.300.16 Support Disc, diagonally right	1 piece
	12.300.20 Pullrope, 48 mm	2 pieces (1 )
	12.300.30 Diamond coated Drill for Screw Ø 1.6 mm 12.300.60 and .70	2 pieces (1 )
	12.300.35 Diamond coated Drill for Screw Ø 1.8 mm 12.300.65	2 pieces (1 )
	12.300.47 Driver Guide, short	1 piece
	12.300.60 Screw, Ø 1.6 mm, 10 mm, S = Short	2 pieces (1 )
	12.300.65 Screw, Ø 1.8 mm, 10 mm, SF = Short & Fat	2 pieces (1 )
	12.300.70 Screw, Ø 1.6 mm, 16 mm, L = Long	2 pieces (1 )
	12.300.75 Screw Ø 1.8 mm, 16 mm, LF = Long & Fat	2 pieces
	12.300.80 Quadrant Support for Benex® to bridge over bigger gaps and for the universal molding	1 piece

NEW!

Pole Extractor for Benex®

The Pole Extractor

The patented supplement
to the Benex® II Extraction
System:

for roots with a strong decline
to the occlusion level and / or
inappropriate access for the po-
sitioning of the Benex® Extractor

for poorly anchored root / tooth
fragments:

- in apical root fractures after
conventional extraction
- in deep loss of attachment
 - in small periodontal root
surface
- in deflected tooth germs

Examples of use:

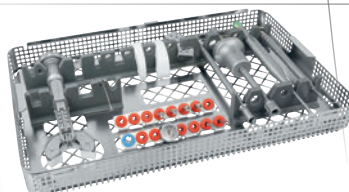
- palatal roots of the molars
in the upper jaw
(buccomesial decline)
- distal roots of the molars in
the lower jaw (mesial decline)
- horizontally deflected canines
in the upper jaw
 - apical root fragments after
conventional extraction
 - loosened roots in the case
of deep loss of attachment
 - roots with small periodontal
surface
 - deflected root germs
(mesiodens et al.)

For detailed information,
examples of use and the Benex®
User Forum, please refer to:
www.benex-dent.com

12.300.11

Benex® Pole Extractor

Scale 1:1



Article description

12.300.11 Benex® Pole Extraktor

Order quantity

[]

12.302.00 Benex® II Extraction System

[]



HELMUT ZEPF
MEDIZINTECHNIK GMBH

Order by fax to +49 (0) 7464 / 98 88 -88 or online at: www.zepf-dental.com

Client Number

Company / Practice

Street, Number

Postal Code, City

Date

Source of Supply / Depot

Phone / Fax

Signature of the Client